



# UPS series UPS 123606



## Valve Regulated Lead Acid Battery

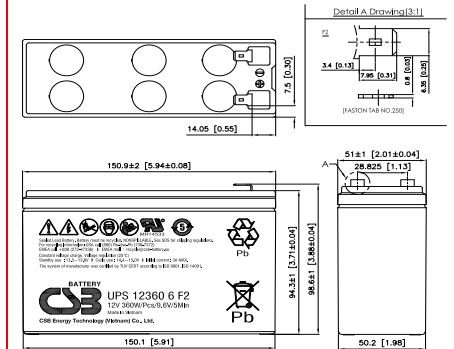
Maintenance-Free Sealed Lead Acid Battery.  
Absorbent Glass Mat (AGM) technology for efficient gas recombination of up to 99%.

### General Design for Standby Power Applications

<b>【Design Life】</b> Up to 5 Years in Standby Service at 25°C Eurobat (20°C) : 3-5 YEARS STANDARD COMMERCIAL	<b>【Float Charging Voltage】</b> 13.5 ~ 13.8 VDC/Unit at 25°C (77°F)
<b>【Operating Temperature Range】</b> Nominal Operating Temperature : 25°C (77°F) Discharge : -15°C ~ 50°C (5°F~122°F) Charge: -15°C ~ 40°C (5°F~104°F) Storage: -15°C ~ 40°C (5°F~104°F)	<b>【Equalization Charging Voltage】</b> 14.4 ~ 15.0 VDC/Unit at 25°C (77°F)
	<b>【Self Discharge】</b> Less than 10% after 90 days, can be stored up to 6 months at 25°C (77°F); Fully recharging is required before usage, and charged sooner if stored at higher temperature than 25°C (77°F).

### Specification Design according with IEC 61056-1/2:2012

Nominal Voltage	12V (6 cells per unit)	
Nominal Capacity	360W @5min-rate to 9.60V per PCS @25°C (77°F)	
Weight	Approx. 1.97 Kg (4.34 lbs)	
Maximum Discharge Current	100/130 A (5sec)	
Internal Resistance	Approx. 20.70 mΩ	
Short Circuit Current	325A	
Maximum Charge Current	3.0 A	
Terminal types	F1/F2 terminal -Faston Tab 187/250	
Terminal tightening torque	--	
Container Material	ABS (UL 94-HB) & Flame Retardant (94-V0) available upon request	
Dimensions	Length (L)	150.9±2.0 mm      5.94±0.08 inch
	Width (W)	51.0±1.0 mm      2.01±0.04 inch
	Container Height (h)	94.3±1.0 mm      3.71±0.04 inch
	Overall Height (H)	98.6±1.0 mm      3.88±0.04 inch



### Constant Current Discharge Characteristics Unit: A (25°C, 77°F)

F.V/Time	2MIN	4MIN	5MIN	6MIN	8MIN	10MIN	15MIN	20MIN	30MIN	45MIN	60MIN	90MIN
1.60V	61.7	41.2	35.3	31.1	24.7	20.7	15.2	12.1	8.90	6.43	5.10	3.64
1.67V	55.0	38.8	33.7	30.1	24.0	20.4	15.1	12.1	8.84	6.38	5.06	3.62
1.70V	52.2	37.5	32.6	29.2	23.6	20.1	15.0	12.0	8.81	6.34	5.02	3.61
1.75V	47.1	34.6	30.8	27.2	22.5	19.2	14.6	11.8	8.68	6.26	4.97	3.58
1.80V	42.4	31.4	27.6	24.8	20.7	18.0	13.9	11.3	8.40	6.11	4.88	3.52
1.85V	36.8	27.0	24.1	21.7	18.5	16.4	12.7	10.5	7.95	5.79	4.63	3.38

### Constant Power Discharge Characteristics Unit: W (25°C, 77°F)

F.V/Time	2MIN	4MIN	5MIN	6MIN	8MIN	10MIN	15MIN	20MIN	30MIN	45MIN	60MIN	90MIN
1.60V	558	403	360	318	259	222	169	135	100	73.0	58.4	42.4
1.67V	529	388	347	308	254	218	167	134	99.1	72.4	58.0	42.3
1.70V	510	381	340	301	250	216	165	133	98.7	72.1	57.7	42.0
1.75V	472	364	319	287	238	210	159	132	98.2	71.7	57.3	41.7
1.80V	423	330	293	264	225	199	154	126	96.0	70.3	56.4	41.2
1.85V	374	287	261	238	204	183	142	119	91.7	67.7	54.6	40.2

Please refer to the official site for the latest rating confirmation. URL: [www.csb-battery.com](http://www.csb-battery.com)

Issued: 200927

### Sales Offices

希世比能源科技股份有限公司  
CSB Energy Technology Co., Ltd.

#### BUSINESS HEADQUARTERS

Tel: +886-2-2880-5600  
Fax: +886-2-2888-3300

#### USA OFFICE

Tel: +1-817-244-7777 / 1-(800)3-CSB-USA (272872)  
Fax: +1-817-244-4445

#### SHENZHEN OFFICE (CHINA)

Tel: +86-755-8831-6488/6775/6075  
Fax: +86-755-8831-6548

#### EUROPE (EMEA) OFFICE

Tel: +31(0)180-418-140  
Fax: +31(0)180-418-327

#### SHANGHAI OFFICE (CHINA)

Tel: +86-21-5046-1622/0833/0094  
Fax: +86-21-5046-1046

Recognized under UL 1989,  
and certified by ISO 9001, 14001, 45001, 50001.



#### TAIPEI OFFICE

Tel: +886-2-2880-5600  
Fax: +866-2-2888-3300

#### BEIJING OFFICE (CHINA)

Tel: +86-10-6597-8065/8165/8265  
Fax: +86-10-6597-8565